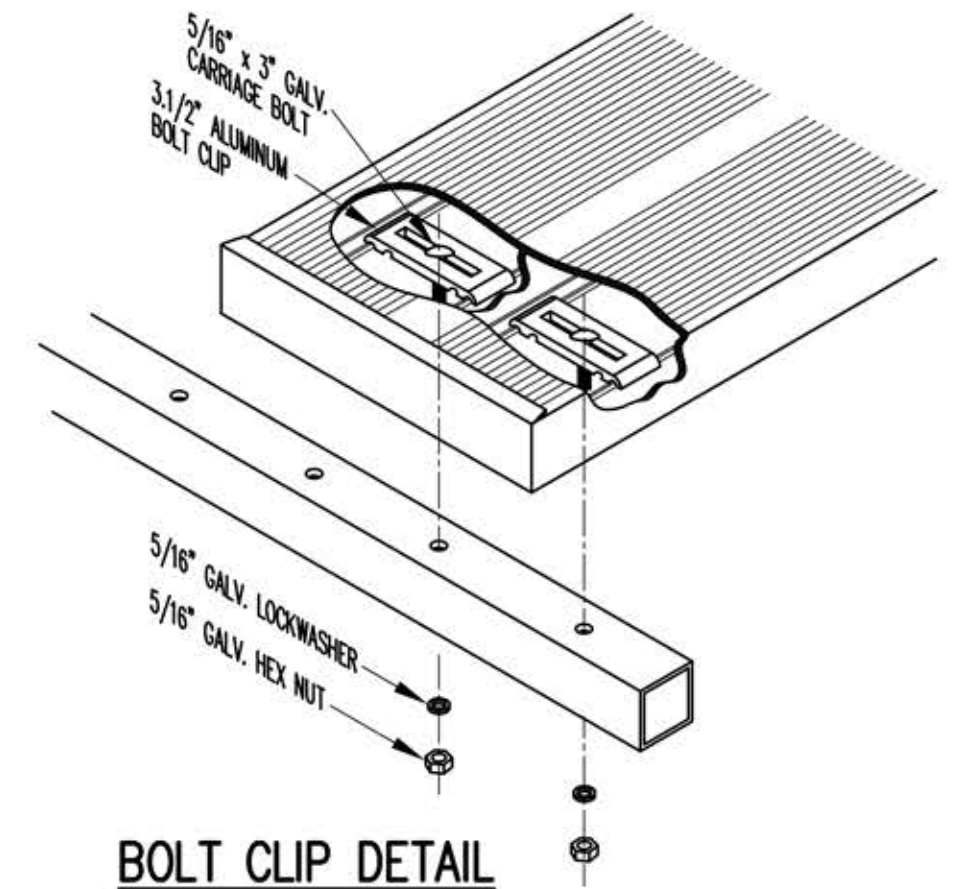
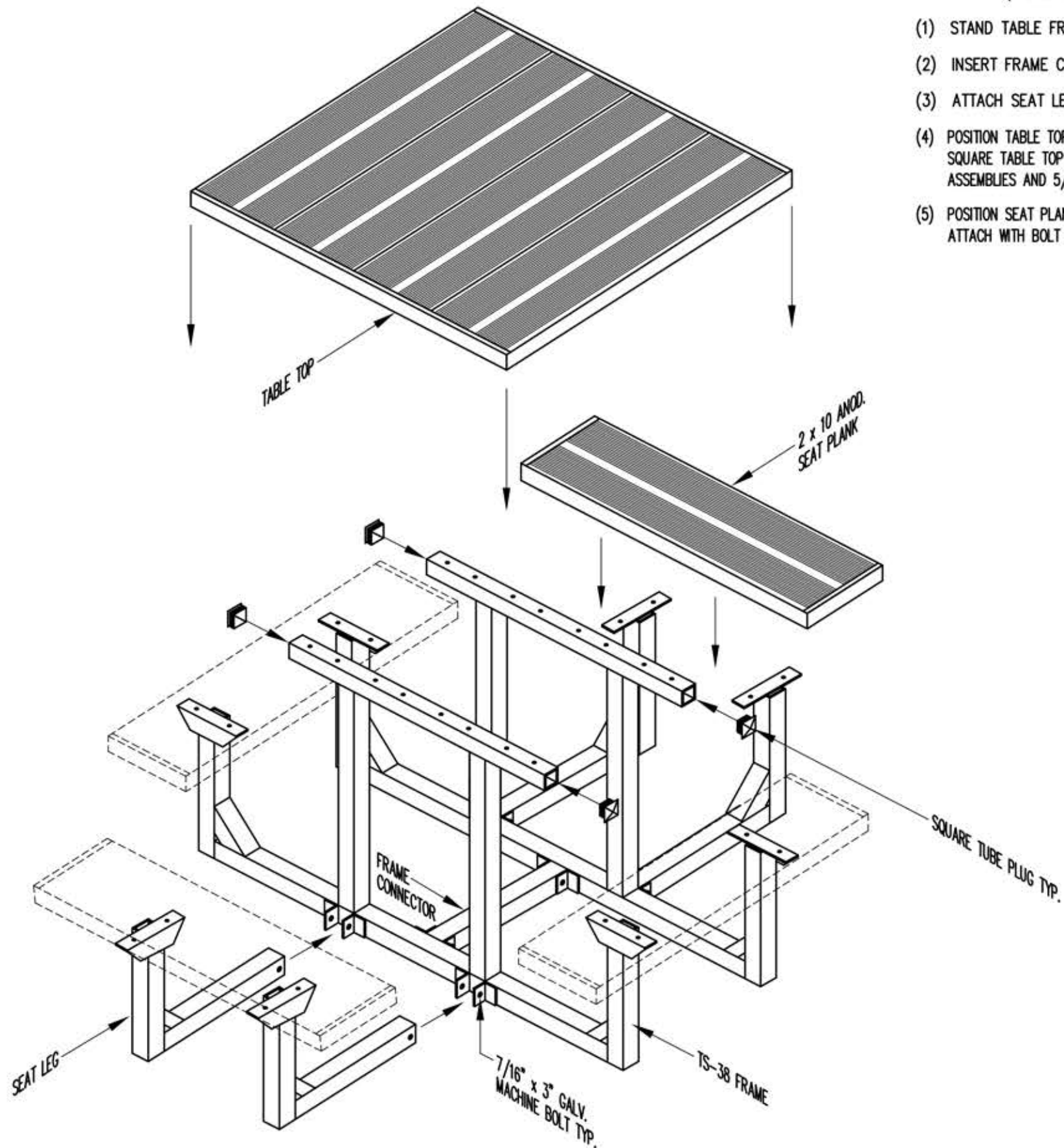


TS-38 PICNIC TABLE

(TABLE SQUARE)

- (1) STAND TABLE FRAMES UPRIGHT APPROXIMATELY 17" APART.
- (2) INSERT FRAME CONNECTOR AND SECURE WITH $7/16"$ x 3" BOLTS AS SHOWN.
- (3) ATTACH SEAT LEGS WITH $7/16"$ x 3" BOLTS AS SHOWN.
- (4) POSITION TABLE TOP ONTO TABLE FRAMES. ALLOW $8\frac{1}{2}"$ PLANK OVERHANG. SQUARE TABLE TOP TO TABLE FRAMES AND ATTACH WITH BOLT CLIP ASSEMBLIES AND $5/16"$ x 3" CARRIAGE BOLTS.
- (5) POSITION SEAT PLANK ONTO FRAMES ALLOWING $8\frac{1}{2}"$ OVERHANG. ATTACH WITH BOLT CLIP ASSEMBLIES AND $5/16"$ x $1\frac{1}{4}"$ CARRIAGE BOLTS.



BOLT CLIP DETAIL



SIGHTLINES
ATHLETIC FACILITIES
CRESTWOOD, KY
800-609-1545